

Wild and Remote Tanzanian Frontier Safari

June through October 2011

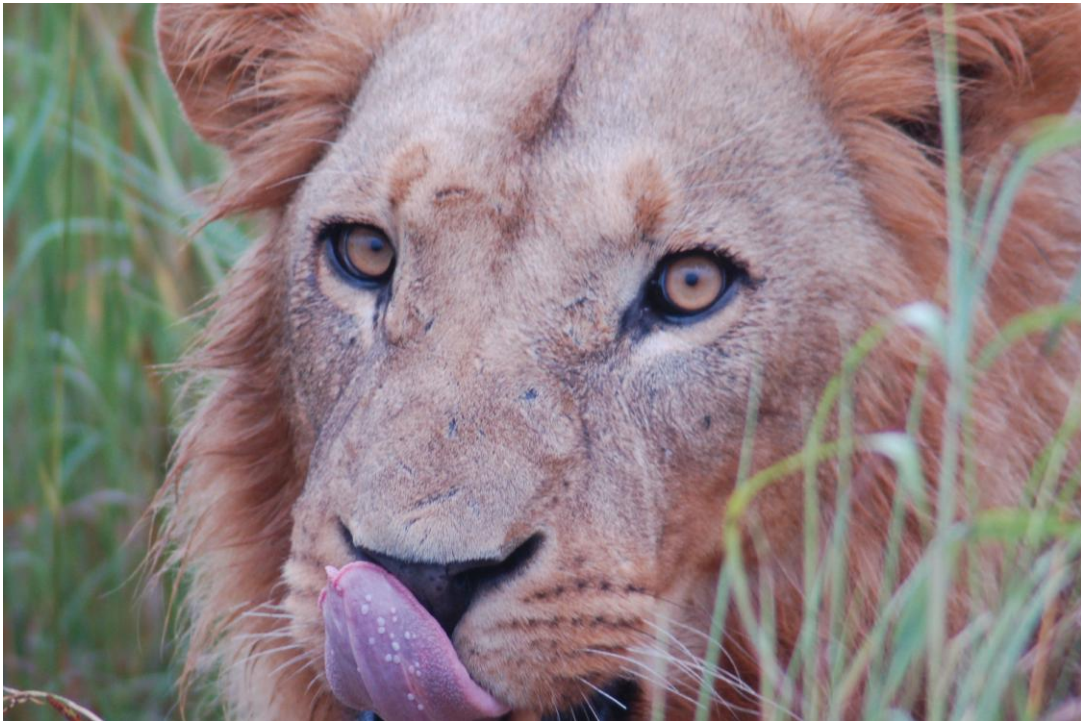


17921 W. 59th Ave, Golden, CO 80403
720-497-1250 bgiven@thewildsource.com
www.thewildsource.com

Introduction

Certainly Tanzania is a well known safari destination and has areas that are heavily toured, yet this amazing country still has many National Parks and regions that receive very little visitation and surprisingly these are some of the most spectacular areas in all of Africa but they have flown under the radar while tourists flock to the Ngorongoro Crater and Serengeti National Park.

In particular two National Parks, Katavi and Mahale, are tucked in the far west of the country far off the beaten path and receive a very limited number of visitors annually. These two parks are easily combined together to provide a spectacular safari experience and they form the core of your itinerary. Beyond these two wild gems Ruaha National Park is now the largest in the country and is rugged and exciting and still not well known outside of safari aficionados.



Combining these 3 fantastic parks together creates a safari full of big game viewing with the giants well represented -- lion, buffalo, elephant, giraffe and hippo should all be present and provide stellar observation opportunities. You will also see many lesser known species and some of the fascinating small life that surrounds you in these expansive wildernesses. Unlike most safari goes you will also have the very rare opportunity to be in the presence of chimpanzees. An active endeavor, you will experience tropical jungle alive with the charismatic chimps that provide a safari experience unmatched by any other species.

Itinerary with The Wild Source

- Day 01 Depart
- Day 02 Arrive in Dar es Salaam. Met and transferred to the Southern Sun Hotel.
- Day 03 Morning pick up to transfer you back to the Dar es Salaam airport. Scheduled flight to Ruaha National Park departs at 10:30 a.m. and arrives at 1:25 p.m. Met by your guide and taken to Kigelia Camp.
- Day 04 Ruaha N.P. Kigelia Camp.
- Day 05 Ruaha N.P. Kigelia Camp.
- Day 06 You are on an early morning flight departing at 7:00 a.m. to Katavi N.P. arriving at 9:10. Met by your guide and game drive to Chada Katavi.
- Day 07 Katavi N.P. Chada Katavi Camp
- Day 08 Katavi N.P. Chada Katavi Camp – option to fly camp in a remote bush location if desired.
- Day 09 Katavi N.P. Chada Katavi Camp
- Day 10 Full morning game drive in Katavi before a flight departing at 12:20 and arriving at Mahale Airstrip at 1:00 p.m. Met by your guide and then board a panga boat for an approximate one hour boat ride down Lake Tanganyika to Greystoke Mahale Camp.
- Day 11 Greystoke Mahale – chimp trekking
- Day 12 Greystoke Mahale – chimp trekking
- Day 13 Enjoy the morning at Mahale before boarding the boat and departing on a 1:20 p.m. flight to Kilimanjaro International Airport arriving at 5:30 p.m. in time to connect with your international flight home.
- Day 14 Arrive home.

Cost \$8,550 per person sharing. Pay by check or bank wire price.

Includes on safari all accommodation, meals, drinks (excluding premium brands and champagne), activities, one night Katavi fly-camping, park fees, laundry, transfers, and flights beginning in Dar es Salaam and ending at Kilimanjaro. In Dar es Salaam accommodation, breakfast, and road transfers with the airport at included.

Out of Pocket Expenses that are not Included

International Air to Dar es Salaam and from Kilimanjaro International Airport.

Tanzania Entry Visa – Currently \$100 per person

Dinner in Dar es Salaam and at Kilimanjaro International Airport

Tips -- \$10 per person per day to your guides and \$5 pppd to camp staff is recommended

Southern Sun, Dar es Salaam – 1 Night



The Southern Sun Hotel is in the commercial centre of the city, and it borders the Botanical Gardens and diplomatic offices. The central location of the hotel makes it a great choice. The hotel ambience and décor would meet the approval of the founder of Dar es Salaam, the Sultan of Zanzibar, who established the city in 1882. Following in this tradition, all guests to Southern Sun Dar es Salaam are welcomed and treated like royalty.

Southern Sun Rooms offer elegant, spacious comfort with all modern amenities required to feel homely and at ease. Room all cater to the demands of the modern traveller requiring sanctuary and calm making this a great place to sleep off your jetlag before starting your safari.

Kigelia Camp, Ruaha National Park – 3 Nights

Recently becoming Tanzania's largest national park, Ruaha, is considered by many to be the definitive game park because it lies at the transition point of the northern acacia savanna and the southern miombo woodlands biome and thus has a tremendously diverse mix of the East African and Southern African wildlife. For example, this is a rare place where striped hyena from the north, brown hyena from the south, and the wide ranging spotted hyena all co-exist. Likewise greater and lesser kudu mix here. The park is known for its evocative scenery with rugged, highly variable terrain. The Ruaha river provides the only reliable source of water for a huge area leading to intense wildlife viewing with large prides of lions, Tanzania's best concentration of elephants, thousands of buffalo, and surprisingly good populations of cheetah, leopard, sable, roan and many other species. Despite the biological richness and dramatic landscape the park only has four permanent camps/lodges and two seasonal tented camps for a total of just a little over 100 beds, compared to the Serengeti with over 700 beds per night. It is not unusual to go for long game drives in this great park and not encounter another vehicle.



Wildlife viewing is outstanding during the dry season from June through November as animals continue to be drawn to permanent water and concentrations increase. When rain comes the animals begin to spread out but viewing remains good into February when the wildlife becomes very dispersed.



Set in a secluded grove of *Kigelia Africana* or 'Sausage' trees, high on the banks of the Ifuguru Sand River in the Ruaha National Park, Kigelia is an exclusive and totally secluded camp. The backdrop of a baobab forest, rocky hills and the Great Ruaha River makes the camp incomparable.



Kigelia Camp consists of six spacious and luxurious tents, with locally crafted recycled wood beds, en-suite flushing toilets and outdoor showers. Guests enjoy an authentic camping experience within a totally wild environment. A larger tent provides the living space for dining and relaxing, with tables and chairs, sofas and a well-stocked reference library. Activities include game drives in open sided 4x4 vehicles and it is an excellent area for walking.



Chada Katavi Camp, Katavi National Park – 4 Nights



Katavi National Park is likely Africa's best kept secret. In most countries this park would be the star attraction but due to its remote location and the famed migration in the Serengeti this park has been an afterthought. In fact, Katavi receives around 1,200 visitors a year while the Serengeti may have close to that in a single day. Recent studies suggest the mammal biomass in Katavi is the highest per square kilometer of any major park in East Africa. Of special interest Katavi boasts Africa's greatest concentrations of African buffalo with herds that can number close to 3,000 and an estimated 60,000 in total throughout the park during the dry season.

As water dries up Nile crocodile and hippopotamus pile together in enormous concentrations that can number in the hundreds. Large herds of elephants and a plethora of hoofed animals such as roan antelope, sable antelope, topi, zebra, giraffe, impala, eland, and waterbuck abound. This giant prey base supports a plentiful lion population and secretive leopards inhabit woodland edge habitat. Uniquely, some species that are normally shy and difficult to observe like roan and sable, here are curious and sometimes behave as if they have never seen a game drive vehicle. For those who want to see wild Africa in a manner that approximates what early explorers would have seen this is a great place.



Chada Katavi was the first camp to be established in the wilds of Katavi National Park and it is located deep in the wilderness alongside the Chada plains. Four other camps have now come into the park but they are all in close proximity to one another near the Katuma River while only Chada Katavi exists in its region. This exclusivity helps accentuate the very reason to come to Katavi, to experience a safari with an explorers feel in a wide open wilderness low on tourists but packed with large mammals.

The camp is wonderfully intimate with just six spacious tents well integrated into the environment. Chada Katavi is an extremely rare camp in that it has clung to the atmosphere of an authentic classic safari experience. There is no running water, this is a simple set up that embraces the wild setting and leaves the modern world behind, yet in doing so completely blows guests away with the luxury that can be delivered through service, food, and elegant fine touches that blend with the bush setting.



Tents are well spaced from one another and have large shade net windows to let in lots of light and cool breezes. Beds are large, linens are outstanding, tents have writing desks, canvas chairs for outside seating, and a vintage safari décor. Private bathroom tents are set just steps behind with traditional safari style bucket showers, and long drop toilets.



Fly Camping

Activities include game drives, walking and a night of fly camping (if desired). The guides here are outstanding, amongst the best in Tanzania and they are very flexible in planning drives and walks to meet your desires. Fly camping is an extraordinary experience that is highly recommended as one of the best ways to explore the remote corners of Katavi as a simple camp of mosquito netted tents is set up for you to sleep under the stars in a far flung location where support staff pamper you as if you were at the main camp.



Greystoke Mahale Camp, Mahale National Park – 3 Nights

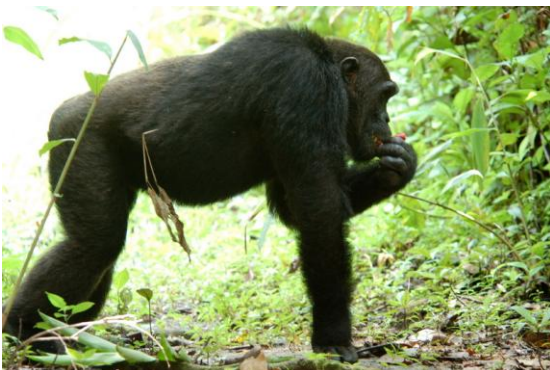


Mahale sets the standard for remoteness in Tanzanian Parks with a completely roadless area. Following a flight to a bush landing strip it is another hour or so by Panga boat to arrive at camp. While Jane Goodall and the chimps of Gombe Stream gained worldwide fame a similar study was taking place in Mahale by a Japanese researcher beginning in the mid-1960's at the same time as Goodall who was working a couple hours to the north. Mahale is 30 times the size of Gombe Stream and has much greater diversity of plants and animals including many species that have disappeared from Gombe Stream. Chimpanzee trekkers typically spend time with M Group, which numbers about 60 individuals.





There can be no other wildlife viewing experience that can connect with one's soul more than spending time with our closest wild relative, the chimps. The chimps can be loud, energetic, and dynamic making viewing extremely exciting and your hour each day in the company of chimps will provide amazing observational opportunities, possibly revealing behaviors that are very familiar and shared with humans. Time with chimps may well resonate in your soul forever after.





Nestled on a far-flung white sand beach bordering Lake Tanganyika, your home at Greystoke is in a wildly exotic wooden banda with open views across the beach. With only 6 bandas this remote location remains intimate and you will be a castaway in paradise but pleasantly surprised with the luxury that has somehow reached this shore. I believe this is arguably the most unique and spectacular of all safari settings.

Chimpanzee trekking is the main attraction at Mahale, and is always given a high priority. In the early morning a tracker goes out to try and locate chimpanzees, usually starting at the area where the chimpanzees nested the previous night and tracking from there. This is occurring while you are having breakfast and thus the guide will often know where to lead you by the time you have finished eating. In Mahale trekking can take up to four or five hours to reach the chimpanzees, though it can also take just $\frac{1}{2}$ an hour, as it all depends on the movements of the chimps as they search for food sources. When food is plentiful they will be very vocal and call other chimps, in times of scarcity they are much quieter and will feed in smaller groups. Once located, you will have one hour with the chimps. Sometimes you may be with them for 15 minutes and then they leave the scene and you have to bushwhack or hike around to meet back up, at this time the clock stops so your hour is all time actually in the presence of the chimps.



In the afternoon following lunch there are many activity options, depending on how energetic you feel as you usually get back from trekking in the early afternoon. Choose between nature walks in the jungle, lounging on the beach, swimming, kayaking, snorkeling, and fishing. The lakes waters are crystal clear and it offers some of the finest freshwater snorkeling in the world. The combination of beach, water, and jungle with chimps is truly magical.

